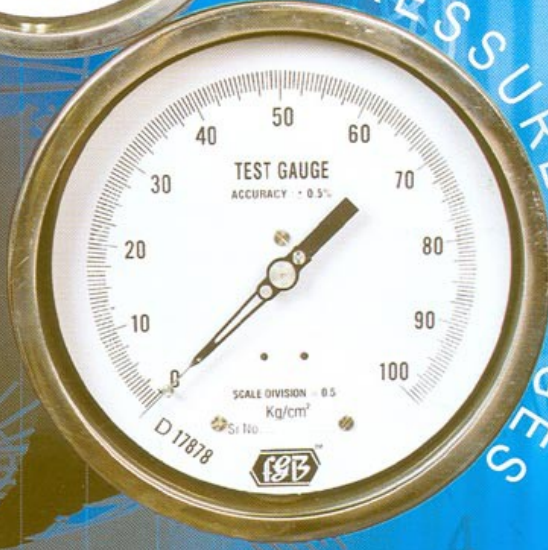
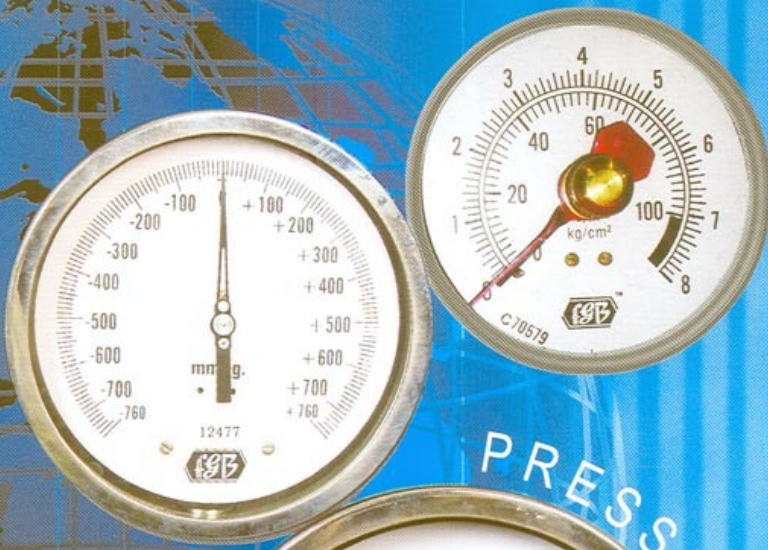




ISO 9001:2000
Engineered to Perform Worldwide

Profile



PRESSURE GAUGES



FGB Manufacturing Co.

Quality
Durability
Reliability
Single Source

SCALE DIVISION



FGB has the perfect answer to all your requirements in pressure gauges. At FGB you will see technology at its best, be it in the components, the advanced production line or the well trained work force. Each gauge undergoes a strict quality control test at every stage, so that you get a product conforming to IS 3624 standards. There is an unwritten maxim at FGB "No Compromise on Quality".



General Purpose Gauges:

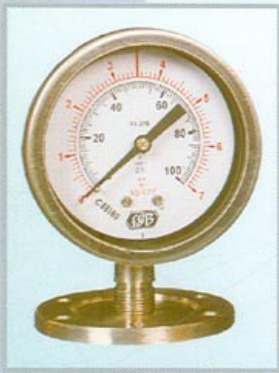
These gauges are suitable for Air, Oil, Gases and Liquids which are not corrosive to copper, oil and steel and for General Industrial Applications such as Boilers, Pumps, Compressors, Machineries, Process & Chemical Plants. Case and Bezel is drawn steel back finish and available in Brass Bottom, Back Connection, Direct Mounting, Surface Mounting and Flush Panel Mounting.

Accuracy : $\pm 2\%$, Temp : 85% C. As per Class II of Is3624 of 1987
MS Casing - Dial Size : 40mm, 50mm, 63mm, 75mm, 100mm, 150mm
Aluminium Casing - Dial Size : 200mm, 250mm

Diaphragm Type Gauges:

These gauges are suitable for process where Corrosive Slurry, Gases or Viscous Fluids may be encountered to perfect the instruments. These gauges are Mild Steel, Stainless Steel, Aluminium Casing & Wetted parts of Stainless Steel. And with optional teflon coated as per customer's requirement (Chemical Seal Diaphragm, Homonizer, Schaffer, Compact Seal).

Accuracy : $\pm 1\%$, $\pm 1.5\%$, $\pm 2\%$
Dial Size : 50mm, 63mm, 75mm, 100mm, 150mm



Industrial Gauges:

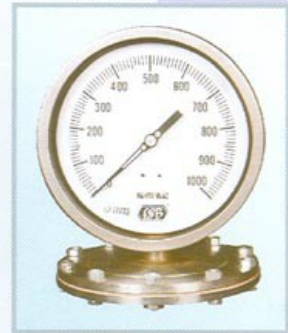
These gauges are ideal for Chemicals and Fertilizer Plants, Refineries, Thermal Power Station and where gauges are installed outdoor and in field services. Choice of Measuring System of Phosphor Bronze, Brass, S.S. 316 is available depending on the process application. Aluminium casing / SS Baynote type. Gauges are weatherproof and dust proof IP55 / IP65.

Accuracy : $\pm 1\%$
Dial Size : 50mm, 63mm, 75mm, 100mm, 150mm, 200mm, 250mm & 300mm

Low Pressure Capsule Gauges:

These gauges are suitable for low pressure measurement of Non-Corrosive Gases, Commercial Heating, Gas Distribution and Filtration. Measuring System in Brass or S.S. Internal flange type. Case material is Cast Aluminium and baynote type complete S.S. Available in pressure range 0-100 mmWC up to 6000 mmWC in pressure, vacuum and compound ranges.

Accuracy : $\pm 1.5\%$ to $\pm 2\%$
Dial Size : 100mm, 150mm



Glycerine Filled Gauges:

These gauges are ideal where pressure gauges are subjected to serve conditions. The filled liquid protects the internal parts against vibration and also lubricates and protects from environmental conditions. The case is made of S.S. Casing & Aluminium Casing Weather Proof as per IP55, and it is filled with Glycerine or Silicon Oil IP65.

Accuracy : $\pm 1\%$ to $\pm 1.5\%$
Dial Size : 50mm, 63mm, 75mm, 100mm, 150mm, 250mm & 300mm

Diaphragm Sealed Gauges:

Recommended where the fluid is highly corrosive, contaminated, viscous or liable to crystallize inside the measuring system. Diaphragm seals are the separation stage between medium & gauge. The gauge above the diaphragm seal is filled with suitable oil which transmit the pressure acting on the diaphragm to the bourdon tube. The diaphragm is welded to the upper part of the sealed unit without removing the gauge to clean the diaphragm. The upper and the lower part are connected by two tension flanges.

As per Party Application ANSI150, 15 NB / 25 NB etc.
Accuracy : $\pm 1\%$ to $\pm 1.5\%$
Dial Size : 63mm, 100mm, 150mm





Compact Capsule Gauges:

These gauges are having smaller capsule of Brass / S.S. 316L. These gauges are ideal for measurements of very low pressure or vacuum normally .Air or Gas which are not corrosive to copper alloy. Also not recommended where gauges are subjected to mechanical vibration or pulsating pressures.

Accuracy : $\pm 2\%$

Dial Size : 63mm, 100mm, 150mm

MPA / KPA / KN / M. BAR / INCH. of water / Feet of Water / MMWC / MWC / CM H₂O etc.



Electric Contact Gauges:

They are used for control of pressure or for audible or visible alarms. Gauges are provided with single, double or triple contacts adjustable throughout the range with different mode of switching action. Choice of low action contact, snap action magnetic contact or inductive contact.

Accuracy : $\pm 1.5\%$ to $\pm 2\%$

Dial Size : 100mm, 150mm

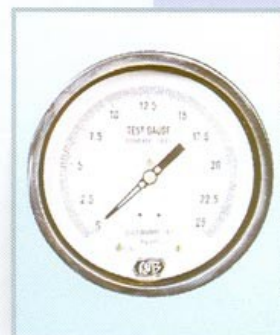


Differential Pressure Gauges:

The Measuring system consisting of 2 bourdon tubes, one for high and one for low pressure line and the pointer of the instrument gives direct reading off differential pressure. Each of bourdon tube can take maximum pressure of 1.3 times the maximum range shown on the dial with the pressure range.

Accuracy : $\pm 2\%$ to $\pm 3\%$

Dial Size : 150mm



Test Gauges:

These gauges are suitable for Laboratories and Industries for inspection of other gauges as well as for high accuracy measurement. Each gauge is tested on a Dead Weight Tester and Test Certificate of Calibration is given along with each gauge. Manufactured in all Standard ranges in Pressure or Vacuum in Kg/Cm² and PSI.

Accuracy : $\pm 0.5\%$ to $\pm 0.25\%$

Dial Size : 150mm, 250mm



Sanitary / Triclover (Clamp Type) Gauges:

These Gauges are suitable for Sanitary Applications, Food and Pharmaceuticals Industries in compliance. Case material is complete S.S. / Glycerine filled.

Accuracy : $\pm 1.5\%$ to $\pm 2\%$

Dial Size : 63mm, 100mm, 150mm

For Commercial Gauges

Size	42 mm	50 mm	63 mm	75 mm	100 mm	150 mm
Bourdon's arc diameter	30 mm	36 mm	36 mm	40 mm	60 mm	75 mm
Movement's ratio	1:10	1:10	1:11.5	1:11.5	1:11.25	1:11.25
Mounting Type No						
Bottom Direct	6BD	5BD	4BD	3BD	2BD	1BD
Bottom Surface				3BS	2BS	1BS
Centre Back Direct	6CBD	5CBD	4CBD	3CBD	2CBD	1CBD
Centre Back Panel		5CBP	4CBP	3CBP	2CBP	1CBP
Centre Back Bracket	6CBB	5CBB	4CBB		2CBB	
Side Back Panel					2SBP	1SBP
Side Back Bracket					2SBB	1SBB
Thread Connection						
1/4" B.S.P. (M) / N.P.T.		*	*			
3/8" B.S.P. (M) / N.P.T.				*	*	*
1/8" B.S.P. (M) / N.P.T.	*	*				
1/2" B.S.P. (M) / N.P.T.					*	*
M20 X 1.5					*	*
M12 X 1.5		*	*	*	*	*
M14 X 1.5		*	*	*	*	*

Size	Dual Range (PSI/KG/CM)
42 mm	Vac & 15 to 6000 PSI
50 mm	Vac & 15 to 10000 PSI
63 mm	Vac & 15 to 15000 PSI
75 mm	Vac & 15 to 15000 PSI
100 mm	Vac & 15 to 30000 PSI
150 mm	Vac & 15 to 30000 PSI
200 mm	Vac & 15 to 30000 PSI
250mm	Vac & 15 to 30000 PSI

Size	Only Kg/Cm ²
42 mm	1 Kg to 400 Kg.
50 mm	1 Kg to 700 Kg.
63 mm	1 Kg to 1060 Kg.
75 mm	1 Kg to 1060 Kg.
100 mm	1 Kg to 2000 Kg.
150 mm	1 Kg to 2000 Kg.
200mm	1 Kg to 2000 Kg.

* Standard available

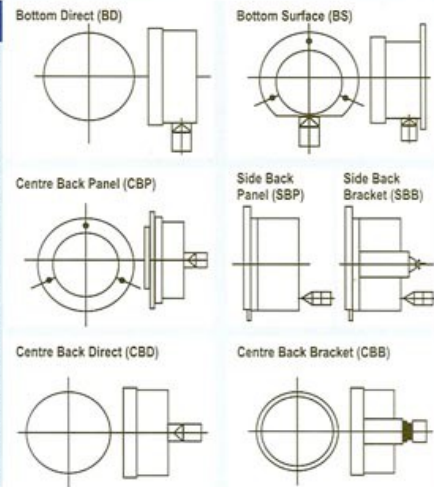
**Freon Gauges with R-12/R-22/R-507/R-504
R-502, F-11/F-22 Temperature Scale**
63mm, 100mm
PSI - 30+150, 0+300, 0+400, 0+500
Kg / cm² -1+12.5, -1+16, -1+25

**Ammonia (NH₃) Gauge
With Temperature Scale**
63mm, 100mm
PSI - 30 +100, 30 +150, 30 +300
Kg / cm² - 1 +12.5, -1 +16, -1 +25

Compound Gauges
30 +15 to 30 +500 PSI
- 1+1 to -1+35 Kg / cm²

Features

Size	: 200mm, 250mm & 300mm
Case	: Aluminium Powder Coated, Brass and Chrome Plated Brass.
Bezel	: Powder Coated & Chrome Plated Brass
Dial	: White background with black markings / red markings
Dial Scale	: Dual graduations with PSI, graduations in feet of water / meters of water. For Hydraulic application special tonnage markings for particular RAM diameter.
Thread Connection	: Sizes threads, 1/2" 1/8", 1/4", 3/8" N.P.T Or B.S.P. (M) B.S.P.T. M12 x 1.5 / M14 x 1.5 / M20 x 1.5 and threads in other sizes.
Accuracy	: +1% from 10 to 90% of scale & 1.5% for the Rest of scale
Accessories	: 1) Built-in-dampener 2) External adjustable dampener & snubber. 3) U/pigtail syphon



Special Application Gauges

Oxygen Gauge : All sizes are available for oxygen service with OXYGEN marked in Red & USE NO OIL marked in black. These gauges are degreased with suitable degreasing agent. These gauges are used in Gas, Shell Co., Refineries & welding applications.

Acetylene Gauges : All sizes are available for acetylene with ACETYLENE marked on the dial in red.

Ammonia Gauges : These gauges are available in 63mm / 100mm size with concentric temperature scale. For ammonia gauges the bourdon, movement & socket are made of stainless steel. The standard thread connection are 1/4 N.P.T. Or 3/8" B.S.P. For commercial Socket & casing is also in M.S. As per customer's requirement to withstand the corrosive effect of Ammonia.

Freon Gauges : These gauges are available in 63mm / 100mm size with concentric temperature scale for R12 or R22 service marked in red.

MPA / KPA / KN / M. BAR / INCH. of water / Feet of Water / MMWC / MWC / CM H₂O etc.

Range		Least	Count	Range		Least	Count	Kg/Cm ²	Least Count	Kg/Cm ²	Least Count
Kg/Cm ²	PSI	Kg/Cm ²	PSI	Kg/Cm ²	PSI	Kg/Cm ²	PSI				
0-1.06	0-15	0.02	05	0-42	0-600	1	20	0-1	0.02	0-250	5.0
0-2.1	0-30	0.05	1	0-56	0-800	2	20	0-1.6	0.025	0-300	5.0
0-3.5	0-50	0.1	1	0-70	0-1000	2	20	0-2.5	0.05	0-400	10.0
0-4.2	0-60	0.1	2	0-106	0-1500	2	50	0-4	0.1	0-500	10.0
0-7	0-100	0.2	2	0-140	0-2000	2	50	0-6	0.1	0-600	10.0
0-10.6	0-150	0.2	5	0-210	0-3000	5	100	0-10	0.2	0-700	20.0
0-14	0-200	0.2	5	0-280	0-4000	10	100	0-16	0.25	mm of Hg to Kg/Cm ²	
0-17.5	0-250	0.5	10	0-350	0-5000	10	100	0-20	0.4	-760 to 0	10
0-21	0-300	0.5	10	0-420	0-6000	10	200	0-25	0.5	-760 to 0.6	0.02
0-28	0-400	1	10	0-560	0-8000	10	200	0-40	1.0	-760 to 1.5	0.05
0-35	0-500	1	10	0-700	0-10000	20	200	0-60	1.0	-760 to 3	0.1
								0-100	2.0	-760 to 5	0.1
								0-160	2.5	-760 to 9	0.2
								0-200	5.0	-760 to 15	0.2
										-760 to 24	0.5

To avoid Damage or Injury and to ensure long life of the Gauge observe the following precautions and guidelines.

1. Clearly specify Oxygen, Acetylene, Ammonia Co₂ and Freon applications while ordering.
2. The gauges in the scope of this catalogue should not be used on corrosive applications.
3. Do not install the gauge by turning the case, use square flats provided on socket.
4. Never mount the gauge without isolation valve.
5. Set the gauge on a rigid support to protect it from vibrations. Use a dampener for pulsating pressure applications.
6. Protect the gauge from excessive direct temperatures. For steam application use gauges with syphon.
7. Do not subject the gauge to more than 75% of maximum range for steady pressure and for fluctuating pressures not more than 60%.



FGB MANUFACTURING CO.
MANUFACTURERS OF : PRESSURE GAUGES



Distributed by

C/209-B, Ghatkopar Indl. Estate, 2nd Floor, LBS Marg, Ghatkopar West, Mumbai 400086.
Phones : (Fact) 2500 7240 / 8060 • (Resi) : 2515 1472 / 1480 • Fax : +91 (22) 6796 9262
e-mail : fgb@fgbindia.com, vinesh@fgbindia.com • website : www.fgbindia.com